



GENERAL

- L.O.A 64.00 m
- L.B.P 58.50 m
- BEAM MLD . 14.00 m
- DRAFT SCANTLING 2.70 m
- VESSEL TYPE COMMERCIAL: LCT
- HULL MATERIAL STEEL
- CLASSIFICATION ABS
- GRT 1319 T

TANK CAPACITIES

- FUEL OIL(DOMESTIC) 309.00 m3
- FUEL OIL(CARGO) 917.00 m3
- FRESH WATER 379.00 m3
- Ballast tanks/drill water 730.00 m3
- Lubricate oil tanks 7.70 m3
- Dirty oil tank 9.00 m3
- Bilge water tank 14.3 m3
- Grey Water Tank 85.00 m3

PERFORMANCES

- CRUISING SPEED 10 Knots
- ENDURANCE About 30 days
- RANGE About 6700 nautical miles

PROPULSION SYSTEM

- MAIN ENGINES 2 x YANMAR 6AYM-WET
Marine Diesel Engine
- POWER 2 x 829 BHP @1900 rpm
- GENSET 2 x 105 Kva, DIESEL DRIVEN
GENERATOR,415/3/50,
3-WIRE ARE PROVIDED;
ENGINES TO BE 24D.C. STARTED
AND HEAT EXCHANGER COOLED
- GEARBOX Rentjes WAF364L RATIO 4.92 : 1

PUMPS

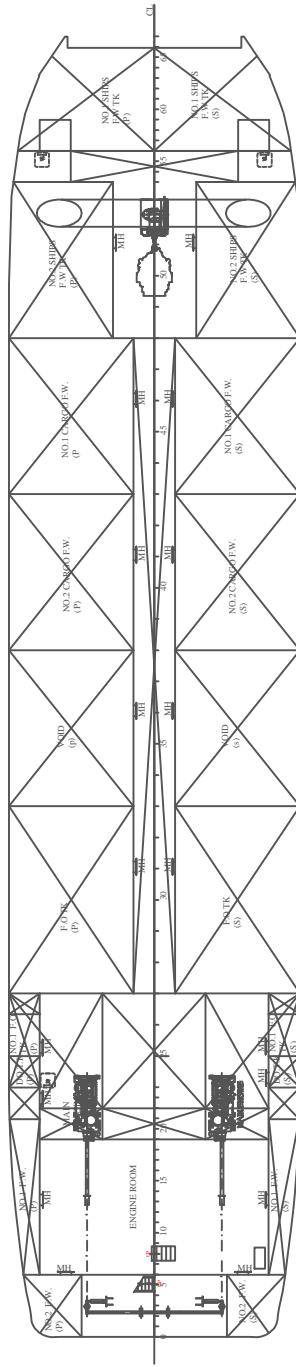
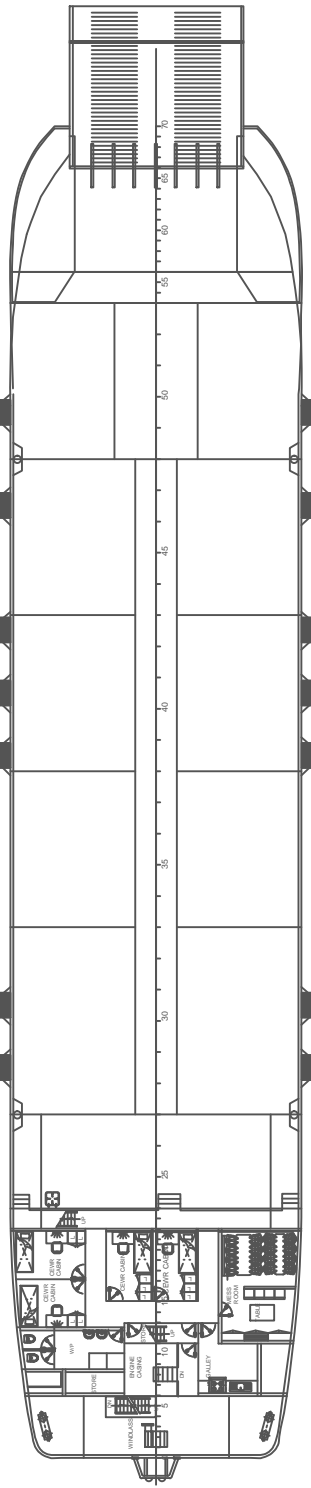
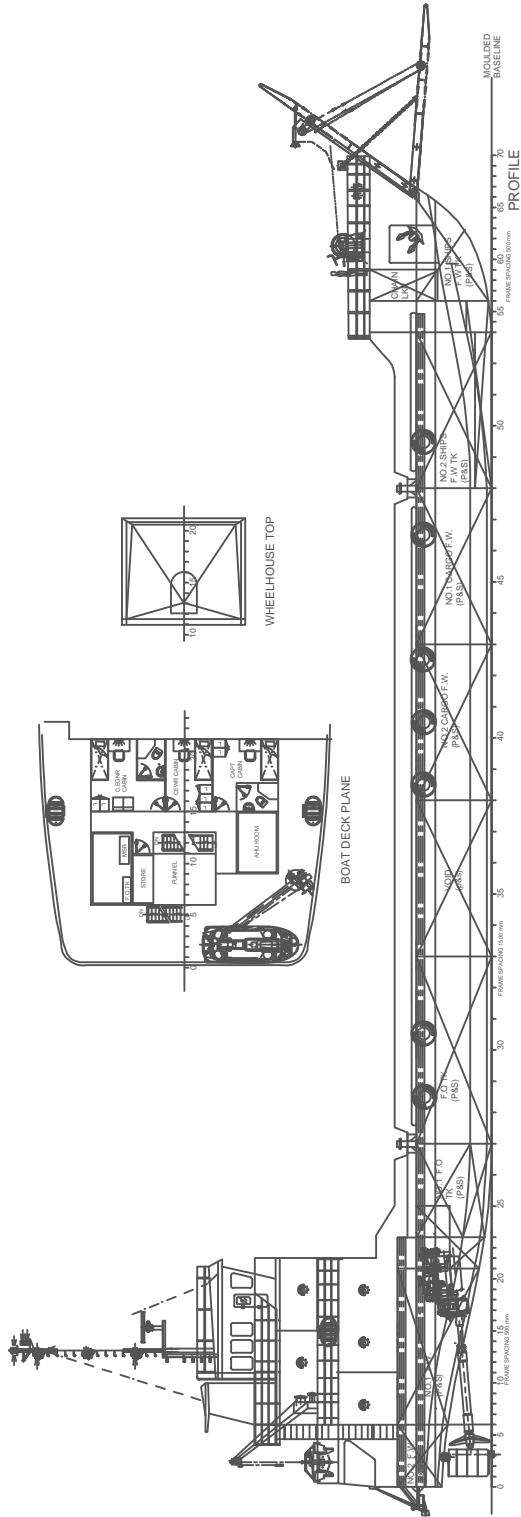
- Bilge, Fire & GS Pump 2 x 45m³/h @45m total head
- Ballast Pump 1 x 100m³/h @ 25m total head
- Fuel Transfer Pump 1 x 10m³/h @30m head
- Emergency Fire 1 x 25m³/h @45m
- Cargo Fuel Oil 1 x 150m³/h @ 60m head
- Cargo Fresh Water 1 x 80m³/h @ 60m head

ACCOMMODATION

- 4 x 1-berth cabins 4 men
- 10 x 2-berth cabins 20 men
- Total 24 men

DECK MACHINERY & SAFETY EQUIPMENT

- Bow Anchors (2) SPEK type Anchor w/ equivalent stockless bower mass of 1740kg.
- Bow Anchor Chains total 247.5 m length (shackles @ 27.5 m) of 36mm dia., grade 2 steel chain cables stud link chains
- Mooring lines 4 x 160M long mooring rope of minimum 132.4 kn breaking strength (nylon ropes)



PRINCIPAL DIMENSIONS

LENGTH O.A (HULL) 64.00 m

BEAM MLD 14.00 m

DEPTH MLD 3.65 m

DESIGN DRAFT 2.7 m

SPEED 10 KN

COMPLEMENT 12 MEN

AAM
Amsterdam Alexandria Marine

Jacobus Stoffaerthuis 116
2122 XZ IJburg
The Netherlands
Tel. +31(0)23534910

64-LANDING-CRAFT

GENERAL-ARRANGEMENT		PROJ.NO: AM5201403	
Scale:	Drawn:	Date:	Drawn No.:
1:40			3-2014

Amsterdam Alexandria Marine